

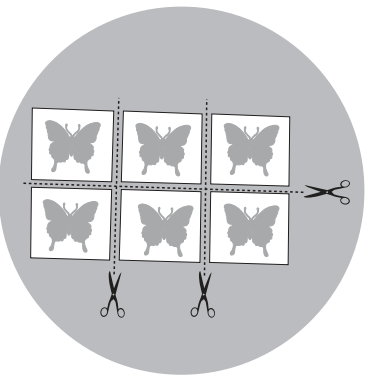


11. While branch decal is still in upwards direction pull the backing paper away from the joint making sure all parts of design come off. While you are pulling the backing paper away, squeegee the branch to the underlying surface with a regular strokes in a direction away from the seam. During application, ensure that decal is held steadily and is kept away from the surface and only allowing the film to come into contact with the surface once it has been pressed with the squeegee.



12. Remove the application tape steadily and at a very sharp angle. Once all the application tape has been removed, carefully run the squeegee again over the entire decal. At this point you can remove branch numbers.

If you have more than one branch, repeat steps 8 through 12 with each branch.

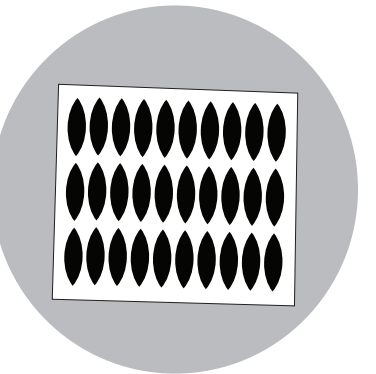


Smaller parts of the decal

(e.g. butterflies, birds, blossoms or leaves)

Cut each individual piece you wish to apply from the sheet. Application of these smaller parts is very simple:

- Peel the transfer tape off with the design on it
- Stick on the desired spot of the surface
- Squeegee it firmly to the surface
- Remove application tape at the very sharp angle



Simple shaped leaves

Some leaves that are simple in shape will have no transfer tape on them as it's much easier to apply them straight from the backing paper.

Simply peel and stick on the wall.

Tree Wall Decal Application Instructions

Please carefully read instructions in full before applying your decal !

Detailed video instructions can be found here: <http://tinyurl.com/lbv3f5>

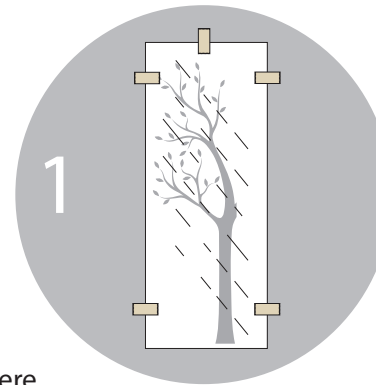
While this decal can be applied by one person it is recommended to have someone helping you.

Important! If you have painted the wall recently - please let the paint cure for at least 3 weeks before applying decal. Otherwise decal application may damage the paint.

Following household items required: Scissors, painters masking tape, clean cloth or a towel, squeegee (provided). Before you begin, please wipe the surface (wall) with a clean cloth or a towel.

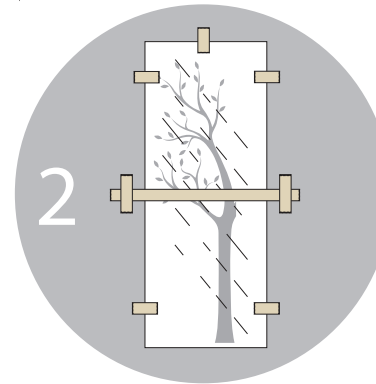
Please run the squeegee over the whole decal by laying it design side down on hard flat surface (wooden floor or a large table). After it's flattened out turn it around and using scissors please separate all decal parts.

How to apply main part.



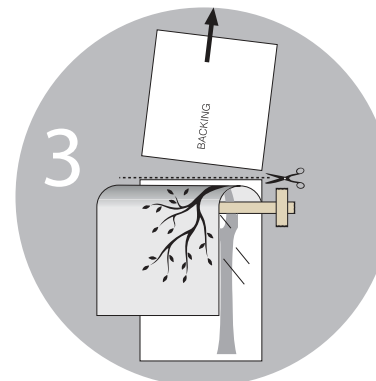
1. Position the decal on the desired surface without removing backing paper. Secure it in place with small strips of adhesive tape (e.g. painters masking tape) making sure there is enough room to add separated branches. Make sure tree is lined up and is at the desired spot.

Fold here

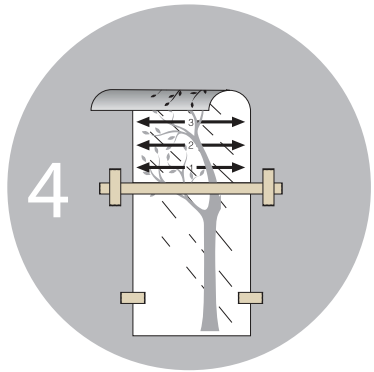


2. Apply a strip of adhesive tape horizontally about half way across the longest side of the decal. You may want to secure the ends of long horizontal tape for extra holding strength by applying smaller strips across the ends (See picture).

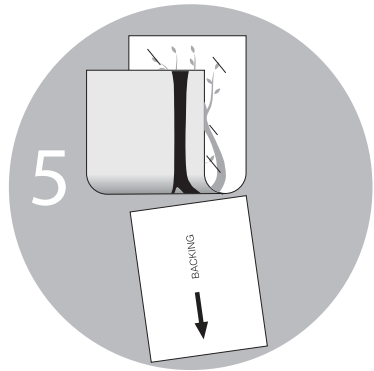
Please note - for some more horizontal designs you will have to apply the painters tape vertically across the decal.



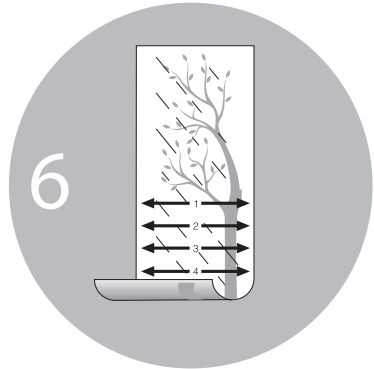
3. Carefully remove tape strips holding up the top and carefully peel the translucent top layer and turn it over making sure all parts of the design has come off the backing paper. Fold it loosely over the still secured other half of decal. Remove the backing paper by cutting it along the central tape.



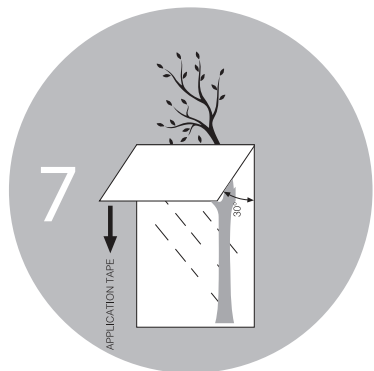
4. Press the decal with a squeegee provided onto the underlying surface using regular strokes from the centre outwards, starting from the central tape. During application, ensure that decal is held steadily and is kept away from the surface and only allowing the film to come into contact with the surface once it has been pressed with the squeegee. Avoid any pressure on the film which could lead to the formation of creases and blisters.



5. Remove all the remaining painters tape and peel the rest of top layer off the backing paper making sure all design pieces coming off. Fold it over already applied part of the decal and remove the backing paper.



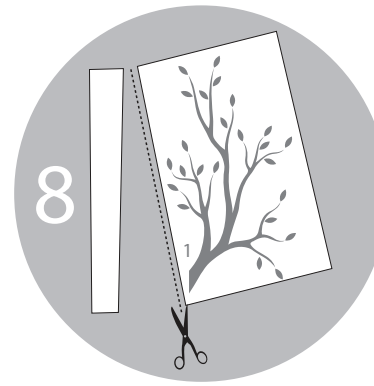
6. Again, press the decal with a squeegee onto the underlying surface using regular strokes from the centre outwards starting from central line. Same as before allow the decal come into contact with the surface once it has been pressed with the squeegee. Avoid any pressure on the film which could lead to formations of creases and blisters.



7. Remove the application tape steadily and at a very sharp angle. Once all the application tape has been removed, carefully run the squeegee again over the entire decal.

How to apply branch(es).

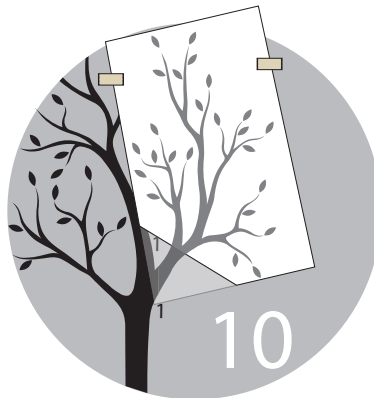
Main decal body have numbers where the branches has been separated. Each branch has a number as well and it has to be applied to the main body at the corresponding number. This is the portion of the installation it is highly recommended to have someone helping you out.



8. If required, cut off excess of the sheet so you have branch joint very close to the edge of the sheet.



9. Slowly peel off transfer tape making sure design is coming off with it. You need to peel only a small portion of the branch at this point. Just enough to join the branch to the main body. Cut off the backing paper off under the peeled off portion.



10. At this point its recommended that someone helps you out. While decal is held up against the wall align the branch joint area to the main body **overlapping slightly (5mm or 1/4 inch)** both parts of design. When joint is aligned squeegee the area firmly.

(Alternatively you can use small strips of painters tape to loosely fix the branch to the wall so you have a room to align the branch seam.)